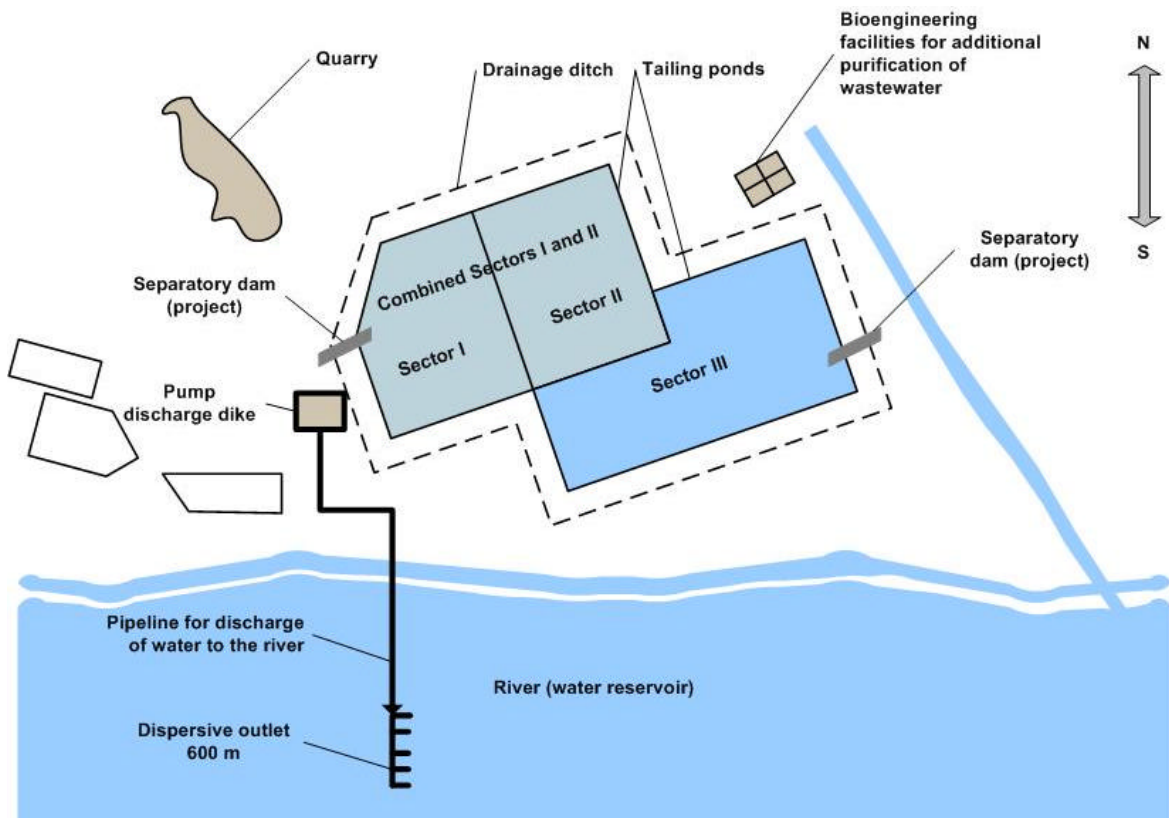
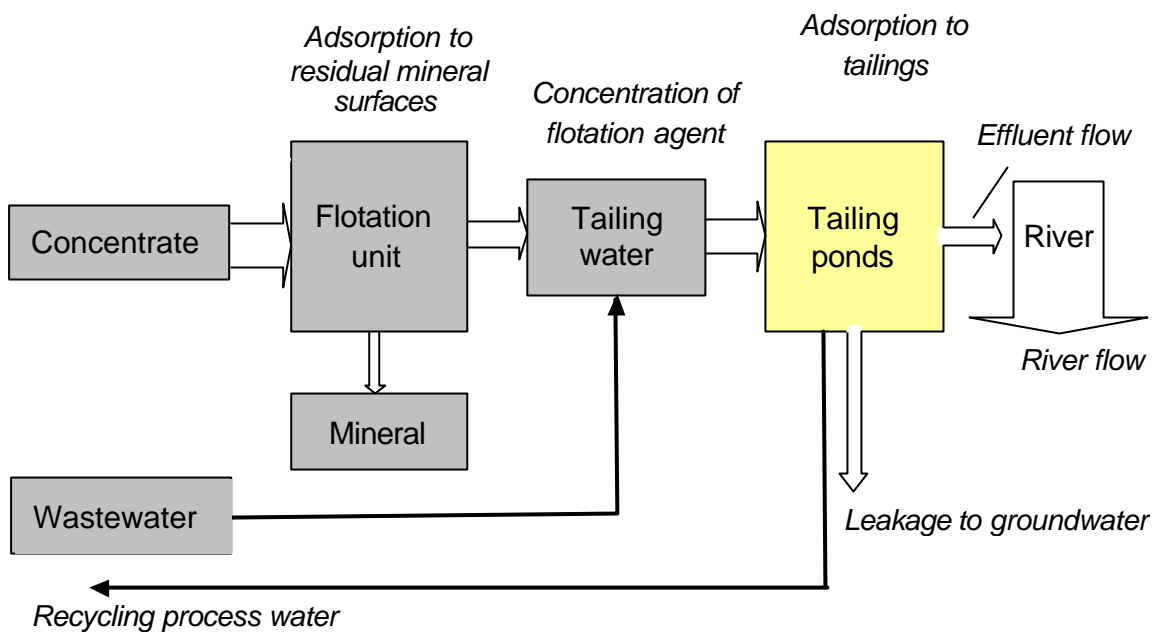


This is an example of a geographical map and a schematic picture of the flows and concentrations of chemical at different points in the process.



This picture is a map of the mining site in the case study. Such information as the areas and volumes of the ponds, how much is pumped into the river and the width and flow of the river are essential in finding out the concentration in the river and groundwater.



This schematic picture describes the water flows in the mineral extraction process and what happens to the concentration of chemical at different points in the process.